



VORTE  **XPROM**

CMD5

CMD5



Consider innovative technology of cold stream mixing (blending, compounding).

The equipment is specialized for the preparation of oils.

Please pay attention to the mixing device CMD5 with an average productivity of 5 m³/hour.

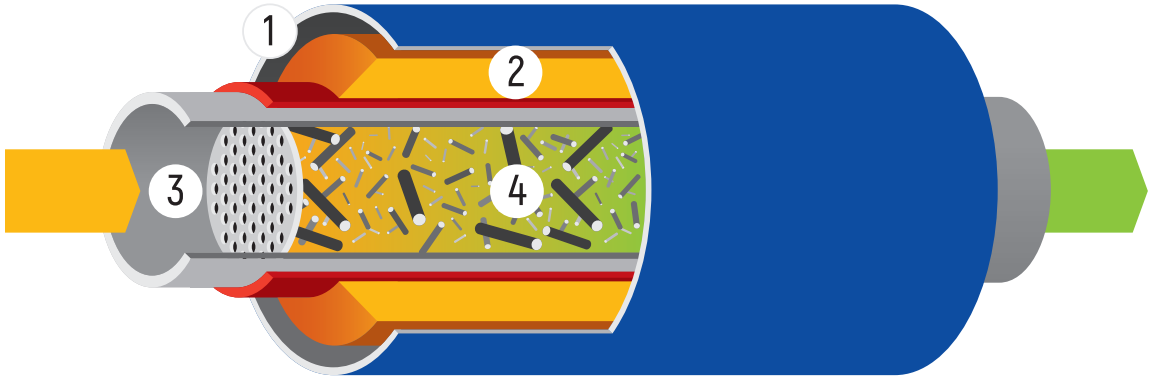


Principle of operation

The components to mix are supplied through the reactor of the apparatus. Inside the reactor components are changing under influence of complex physical and chemical processes, the major ones are: hydrodynamic cavitation, acoustic cavitation, magnetostriction, friction and collision, local temperature increase, effect of the strong magnetic field and others. The reactor of the apparatus works as a catalyst for the reaction.

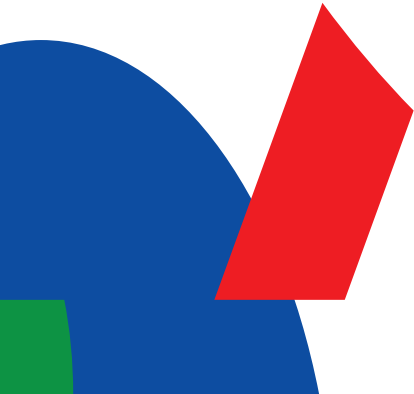


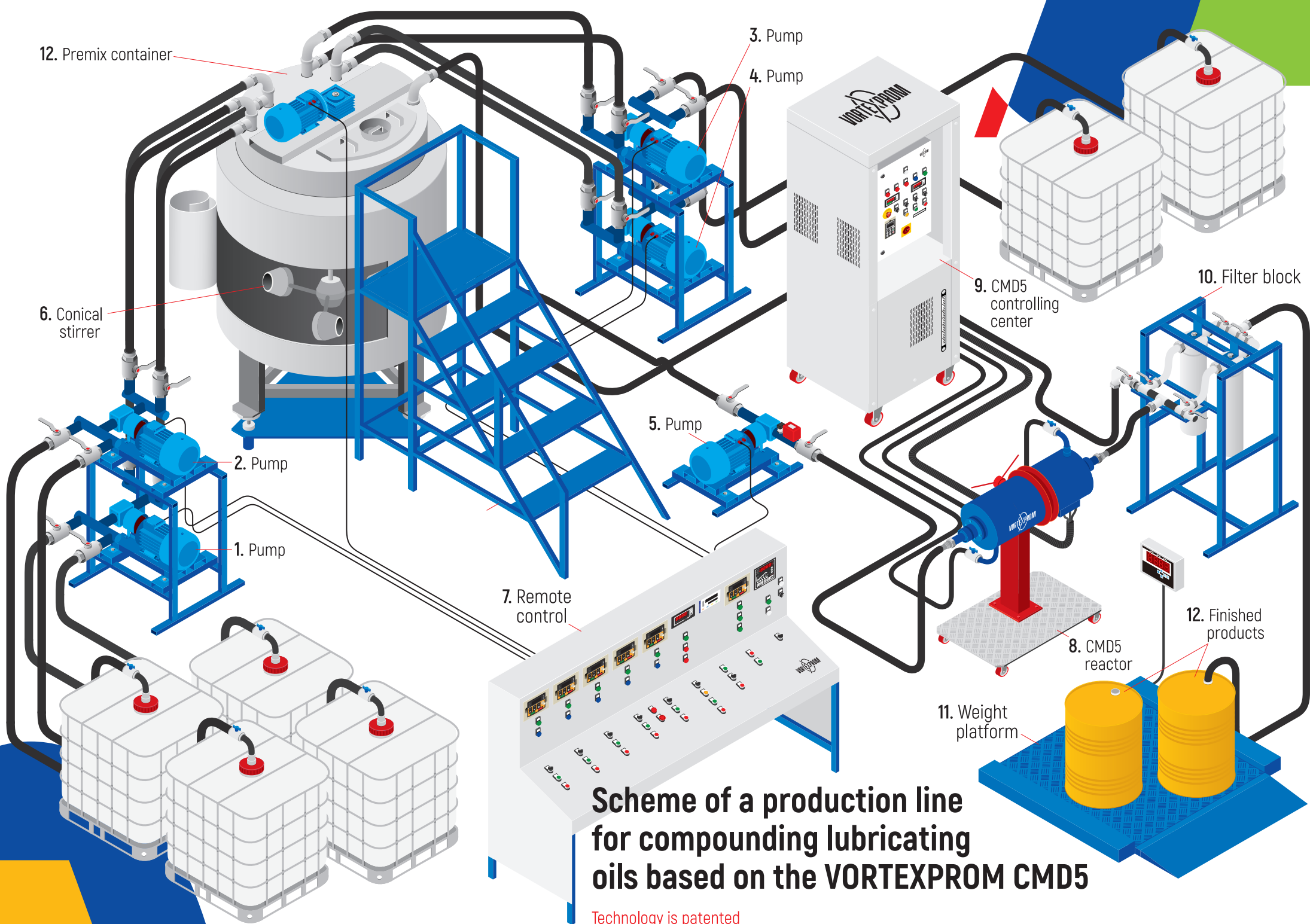
Original product



Modified product

- 1. Body
- 2. Inductor
- 3. Working area
- 4. Molecular mixing zone





Scheme of a production line for compounding lubricating oils based on the VORTEXPRM CMD5

Technology is patented

Photo of the production line for compounding oils



The main advantages of this technology :



Time and quality

The classic method of making oils is mixing the components in a reactor at a specific temperature. Frequently this temperature is 70-80 degrees Celsius, and the mixing time is 8-12 hours. The CMD5 is mixing most kinds of oils without heating by a productivity of 5 m³/hour, the full cycle time to get a batch of oil is 1.5 hours, while we get oils with higher quality indicators.

Economy

Reduction of production areas and of maintenance personnel. The CMD5 will take 2 m² of production area, and it can be quickly reconfigured for different products . Device is simple to operate and maintain, it requires one person to operate.








The cost

Savings on the purchase of equipment. When expanding the enterprise, the company does not need to purchase expensive reactors , pumps and valves for them.

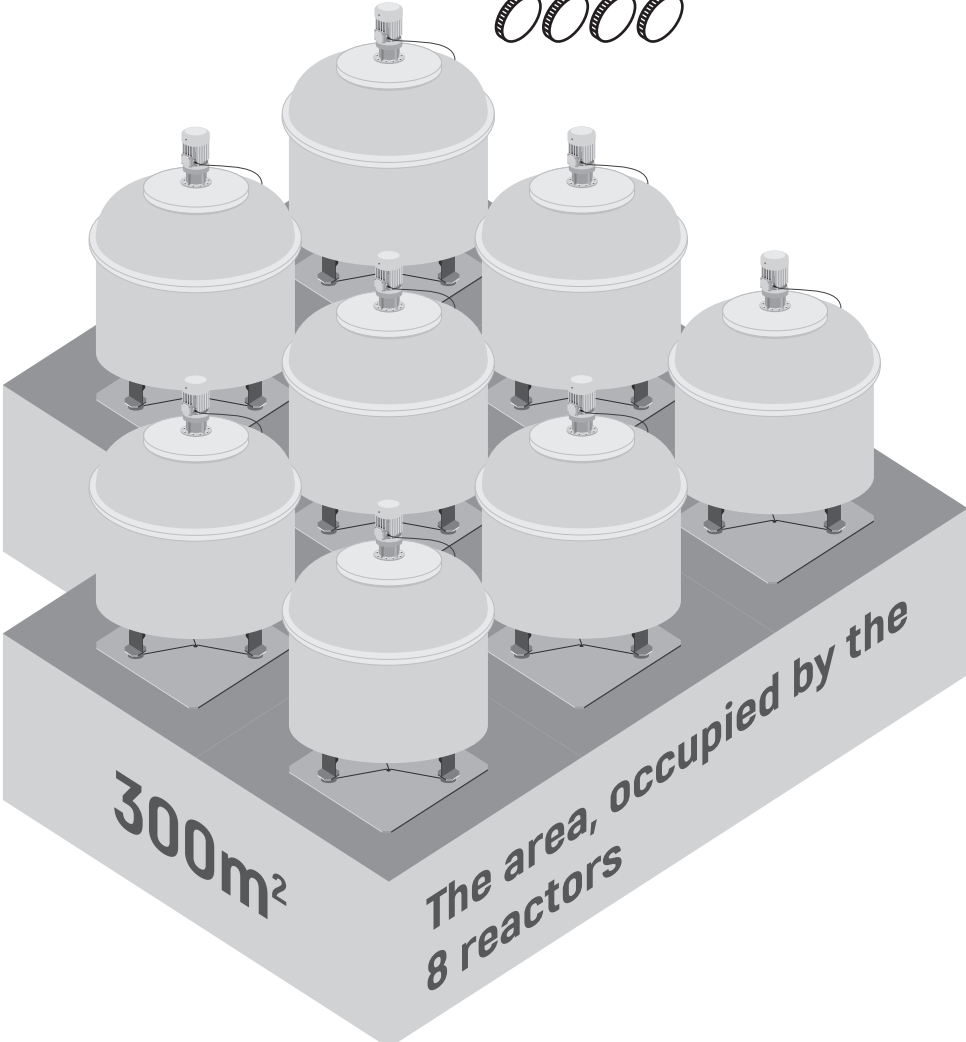
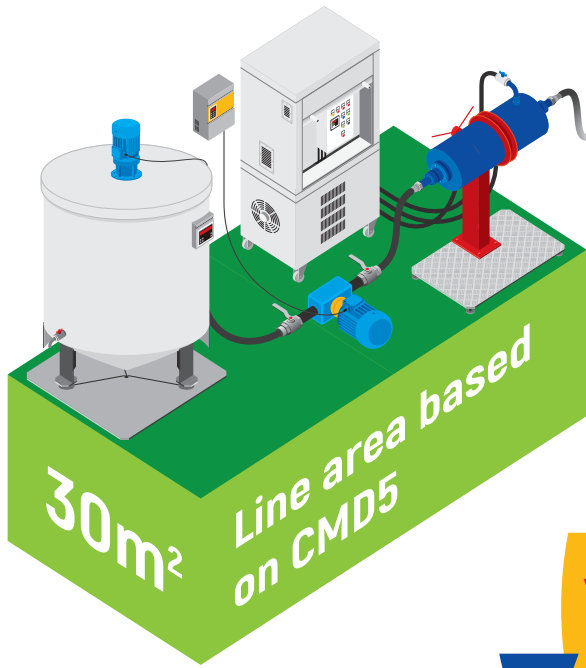
Energy efficiency

High energy efficiency of the process is saving enterprise resources. 1.5 kW of electricity is required per ton of product, and in the classical method, 40 kW of electricity per ton is required for heating and maintaining the temperature.

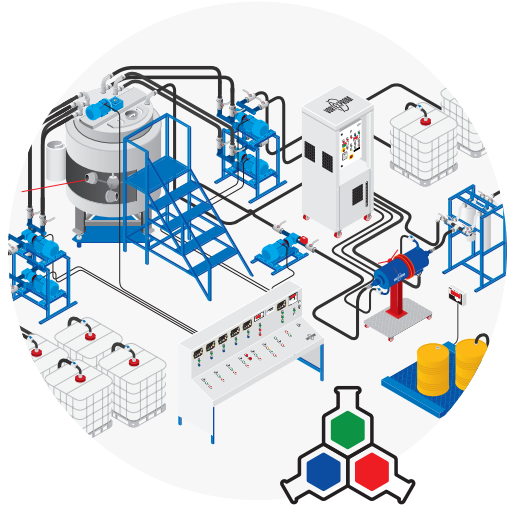
Comparison of VORTEXPROM CMD5 to 8 classical mixing reactors, comparable in production volume

 1.5 hours
 1.5 kW
 
 1 worker

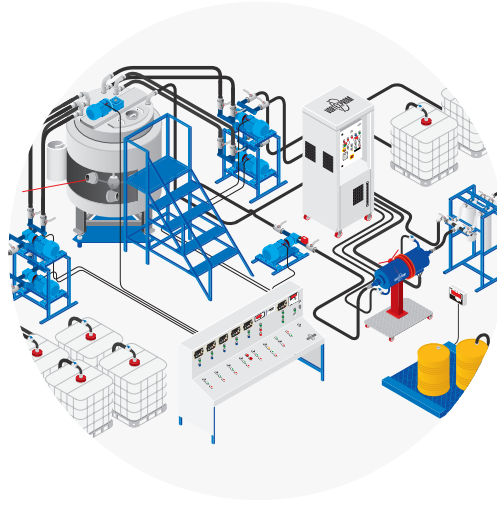
 8-12 hours
 40 kW
 
 8 workers



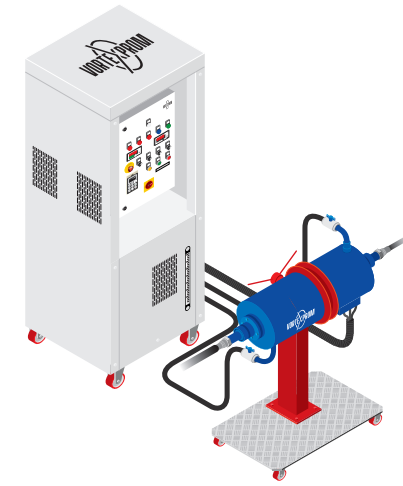
We are ready to offer you:



Production line + laboratory for 7 basic analyzes



Production Line



The CMD5

Hardware warranty 3 years

Best regards, Head of Sales Stanislav Seregin

seregin@vortexprom.com

+7 920 296 23 77

VORTEXPROM

603126, Russia, Nizhny Novgorod ,st. Vostochny passage, 11

vortexprom.com